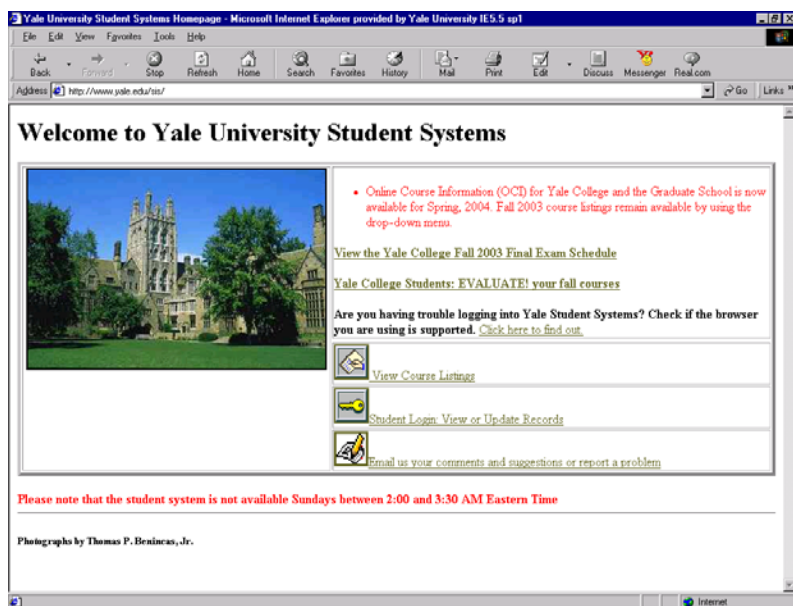


# Instructions for Graduate School Online Course Information and Selection

Online Course Information (OCI) allows anyone to view information about Yale courses available in two consecutive terms. To register for courses in the upcoming term, Graduate School students must use Yale's Online Course Selection (OCS) application. Enter the URL: <http://www.yale.edu/sis> to get to either of these applications.



To access OCI, click on the link:  
[View Course Listing](#).

To do registration, click on the link  
[Student Login: View or Update Records](#).  
You will be required to enter your Yale  
NetID and password to proceed further.

The first time you login each term, you  
will be asked to verify your student data.  
Follow the instructions and then Certify  
that the data is correct. Then choose  
[Online Course Selection](#) from the menu.

We have summarized below the six basic  
steps you will need to take to submit your  
course selections to your adviser/DGS.  
More information is available through the  
Help facility within OCS itself.

## Steps to register for courses using Online Course Selection:

<b>Step 1.</b>	Search and review courses of interest.
<b>Step 2.</b>	Choose specific courses from the "Search Results" page for inclusion in your Schedule Worksheet.
<b>Step 3.</b>	Narrow the courses on the Schedule Worksheet to those you are really interested in taking by creating a tentative schedule.
<b>Step 4.</b>	Review error and warning messages, if any, relating to the courses you want to include on your Schedule Worksheet.
<b>Step 5.</b>	Create your Final Schedule by confirming your course selections. NOTE: You must confirm your course selection using your password before it will be forwarded to your adviser or DGS for approval.
<b>Step 6.</b>	Revise your Course Schedule, if necessary, based on instructions provided to you by your faculty adviser or DGS. Should revisions be necessary, you will be notified via e-mail.

# Online Course Selection

Upon entering Online Course Selection you will be at the Course Selection page. There are a series of links on the left side for navigating within the application and to other sites. You can log out of OCS at any time and whatever work you have done on your schedule will be saved. OCS will automatically time out after a period of inactivity. *For security reasons, always log out of OCS when you are finished and close your browser window.*

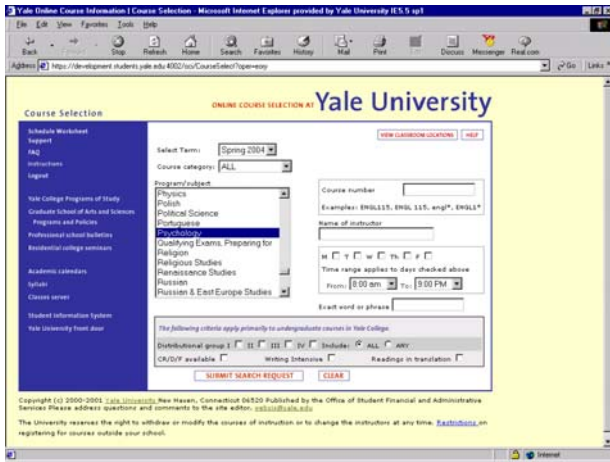
Instructions about what to do on each page are available by clicking the Help button.

The Course Selection page allows you to search for courses being offered for the selected term using the following criteria:

- Course Category (e.g., Yale College or Graduate School)
- Course Subject
- Course Title
- Course Instructor(s)
- Course Meeting Day(s) and Time(s)

Enter your search criteria and click on the **“Submit Search Request”** button. A list of courses matching these criteria will be displayed on the Search Results page. You can add courses from this page or click on **“Return to Course Search”** to make other selections.

Click on the **“Clear”** button to remove all prior search criteria. NOTE: If you do not click on **“Clear”** after a search, the new search will take the criteria from your previous search in addition to your new criteria. This may result in no courses being listed. If a search results in no courses being listed, or if too many courses are retrieved, click on the Help button for hints on how to do a more effective search.



The Course Selection page



The Search Results page

## Search Results Page and Adding a Course

The Search Results Page shows you all of the courses that matched your set of search criteria. Note that Graduate School course subjects and numbers are red and Yale College courses are blue.

Click on a course title to display information about that course in the bottom half of the window.

Click on the **“Add”** box preceding a course or the **“Add”** box above the course description to add that course to your Schedule Worksheet.

Click on the **“Return to Course Search”** button at the bottom of the window to initiate a new Course Search or click on **“Go to Schedule Worksheet”** to see the courses you have selected.

## The Schedule Worksheet

The Schedule Worksheet contains a list of courses that you selected from the Search Results page. Use the Schedule Worksheet to develop your tentative schedule.

If your adviser wants to have an advising session with you, you will receive a message indicating, “**Initial Advising Session Required**”. It is then your responsibility to meet with your adviser before you begin the course selection process for the term. If your adviser does not think an advising session with you is necessary, you will receive a message indicating, “**No Initial Advising Session Required.**” (1) You may then proceed to select your courses for the term without direct consultation with your adviser.

The screenshot shows the 'Schedule Worksheet' interface for Yale University. At the top, it says 'ONLINE COURSE SELECTION AT Yale University'. Below this are tabs for 'Worksheet View', 'Weekly View', 'Daily View', and 'Unofficial Transcript'. The main content area includes the following information:

- Registration ID: 200011 (2)
- Entering Year: 2002 (2)
- December 11, 2003 4:45 PM
- English Language & Literature (3)
- Foreign Language Proficiencies: French (3)
- Admitted to Candidacy: (4)
- Dissertation Prospectus Approved: (5)
- Qualifying Exam Passed: (6)
- Adviser: NO INITIAL ADVISING SESSION REQUIRED (7)
- Course Selection Status: Schedule not submitted (9)
- Status Date: 11-Dec-2003 (8)

Below this information is a table of selected courses:

SELECT	COURSE	CREDITS	GRADE MODE
<input checked="" type="checkbox"/>	APHY 321 01 (21464) SemicondSiliconDevices&Tchnolgy MW 9.00-10.15 1 HTBA	1.0	Regular
<input checked="" type="checkbox"/>	APHY 449 01 (21466) Solid-State Physics II TTh 1.00-2.15	1.0	Regular
<input checked="" type="checkbox"/>	CLCV 406 01 (21596) Athenian Imperial Democracy T 1.30-3.20	1.0	Regular
<input checked="" type="checkbox"/>	CLSS 831 01 (20932) Thucydides Th 1.30-3.20	1.0	Regular

At the bottom of the page, there are buttons for 'SELECT ALL', 'RETURN TO COURSE SEARCH', 'QUICK ADD COURSE', 'CLEAR WORKSHEET', 'CONTINUE', and 'LOGOUT'. Numbered callouts (1) through (9) point to various elements on the page.

There is other information available on the Schedule Worksheet:

The “**Entering Year**” (2) indicates your first year in the Graduate School.

The “**Foreign Language Proficiencies**” (3) field indicates proficiency in any foreign languages.

The “**Admitted to Candidacy**” (4) displays the date that you were admitted to Candidacy.

The “**Dissertation Prospectus Approved**” (5) displays the date that your dissertation prospectus was approved.

The “**Qualifying Exam Passed**” (6) displays the date that you passed the department’s qualifying examination.

The “**Adviser**” (7) field indicates the name of your adviser for course registration. You may have a different research adviser.

The “**Status Date**” (8) column provides the date and time of the last action taken either by the adviser or the student.

The “**Course Selection Status**” (9) column indicates your status in the process of selecting courses and having them approved. Your adviser and/or DGS has an online system that allows him or her to view your schedule for approval once it’s submitted.

The “Course Selection Statuses” are:

Status	Meaning
Schedule Not Submitted	student has not selected any courses and there is nothing to review
Needs Adviser Approval *	student has selected his or her courses and the adviser can click on the name to review the course selections
Adviser requests Revision *	adviser has not approved the student’s course selections and has requested revisions by the student
Resubmitted to Adviser *	student has made the revisions the adviser has suggested and these revisions are ready for the adviser’s review
Needs DGS Approval	student has selected his or her courses and the DGS can click on the name to review the course selections
DGS Requests Revision	DGS has not approved the student’s course selections and has requested revision by the advisee
Resubmitted to DGS	student has made the revisions the DGS has suggested and these revisions are ready for the DGS’s review
DGS Approved	DGS has given final approval to the student’s course selections

\* appear only for students in departments where both faculty advisers and the DGS approve course selection

### Working with the Schedule Worksheet

The Schedule Worksheet is intended to allow you to make changes and work with your schedule until you are ready to submit it to your department for approval.

The “**Grade Mode**” (A) column allows you to select the grading mode for a course. Select “Regular” for regular Graduate School letter grades; select “Audit” for enrollment as an auditor.

Use the “**Return to Course Search**” (B) button to add more courses to the Schedule Worksheet.

Use the “**Quick Add Course**” (C) button to add a course to the Schedule Worksheet without returning to the Search Page.

The “**Select**” (D) check box on the left allows you to keep a course in your schedule, or to de-select it without removing it entirely from your worksheet. To remove a course from your worksheet, click on the garbage can icon to the right.

Click on the “**Clear Worksheet**”(E) button on the bottom of the page to clear all courses from the worksheet.

At the top of the page, there are a series of tabs. Use the **Weekly View tab** to view all selected courses on a weekly schedule grid in calendar format..

Use the **Daily View tab** to view all selected courses on a daily schedule grid.

Use the **Unofficial Transcript tab** to view your courses, grades, adviser(s) and Teaching Fellow Program Participation.

### To Finalize your Schedule

Finalizing your schedule automatically submits it to your adviser or DGS for approval. **NOTE: you will not be registered in your courses until your schedule has been approved by the DGS of your department.**

To finalize your schedule, make sure that all courses to wish to take are marked as selected. Select a course by clicking on the box in the Select Column to the left, if not already checked.

Click on the "**Continue**" (F) button.

## The Tentative Schedule

Once you have hit the "**Continue**" button you will see the "Tentative Schedule."

**Yale Online Course Selection | Tentative Schedule - Microsoft Internet Explorer provided by Yale University IE5.5 sp1**

**ONLINE COURSE SELECTION AT Yale University**

**Tentative Schedule**

						CREDITS	MODE
APHY	321	01 (21464)	<a href="#">SemicondSiliconDevices&amp;Tchnlgy</a>	Tso-Ping Ma		1.0	Regular
			MW 9.00-10.15 1 HTBA				
APHY	449	01 (21466)	<a href="#">Solid-State Physics II</a>	Robert Schoelkopf		1.0	Regular
			TTh 1.00-2.15				
CLCV	406	01 (21596)	<a href="#">Athenian Imperial Democracy</a>	Donald Kagan		1.0	Regular
			T 1.30-3.20				
CLSS	831	01 (20932)	<a href="#">Thucydides</a>	Donald Kagan		1.0	Regular
			Th 1.30-3.20				

**Warnings and Messages:**  
Permission is required from the Director of Graduate Studies. (APHY 321)  
Permission is required from the Director of Graduate Studies. (APHY 449)  
Permission is required from the Director of Graduate Studies. (CLCV 406)

**Confirmation Dialog**  
Click on the box to acknowledge you have read the message: enter your NetID password, then click on the CONTINUE button to proceed. If you decide not to continue, you may either return to the schedule worksheet or logout at this time.

I confirm that the courses above represent my course selections for the term.  
I understand that I am not enrolled in these courses until they have been approved by my adviser/DGS.

Enter your NetID password  and click on Continue.

**Navigation Buttons:** RETURN TO COURSE SEARCH, RETURN TO SCHEDULE WORKSHEET, **CONTINUE**, LOGOUT

### Tentative Schedule and Confirmation Dialog Box

Scroll and view your tentative schedule and check for any "**Warnings and Messages**" (1). If you are selecting courses in Yale College or some of the Professional Schools, you will have warning messages about approvals required.

If you are satisfied with your schedule, then click the check box in the "**Confirmation Dialog**" (2) box at the bottom of the window to acknowledge you are finalizing your schedule. Enter your NetID password and click on "**Continue.**"(3) This will display your final schedule. *You cannot revise your final schedule.*

To print your Final Schedule form, use the "**Print Schedule Form**" button.

Click on the "**Logout**" (4) button to exit from Online Course Information.

Should revisions to your Final Schedule be necessary, you will be notified via e-mail from your adviser or DGS. Your schedule will be automatically re-opened so that you can make the necessary revisions and re-submit your Final Schedule using the same steps above. The "**Action Taken By**" column on the Schedule Worksheet indicates the name of the person who has taken the most recent action on approving your course selections.

There is a link to websis support from the OCS Search Page if you have any problems using the system. Consult the **FAQs** for answers to common questions.